

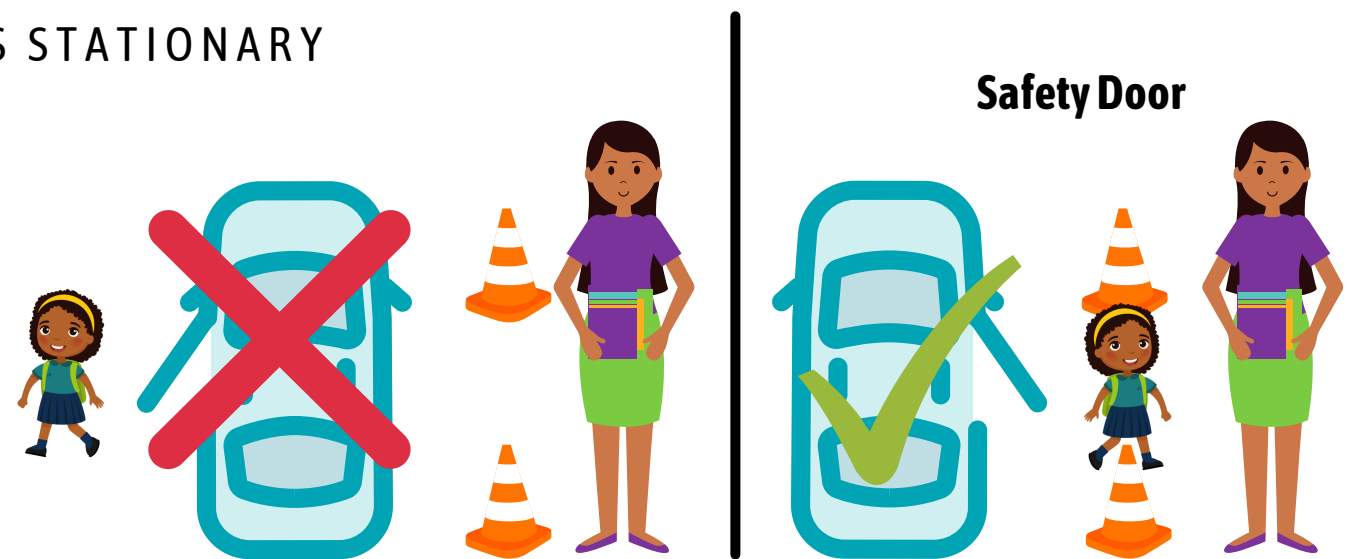


# DROP OFF AND PICK UP ZONE SAFETY TIPS



## SAFETY TIPS FOR DRIVERS

- SLOW DOWN!
- STOP FOR ALL PEDESTRIANS CROSSING
- NOTICE AND OBEY ALL POSTED SIGNS
- THE EXIT GATE ONTO BOUNDARY RD HAS BEEN EXPANDED AND NOW SERVES AS A 2 LANE EXIT: **1 LEFT AND 1 RIGHT**
- **IF YOU DO NOT SEE YOUR WARD AND YOU ARE AT THE FRONT OF THE LINE, YOU MUST CIRCLE UNTIL YOU SEE THEM**
- ONLY PICK UP AND DROP OFF IN YOUR DESIGNATED COLOR ZONE
- CARS IN LINE SHOULD PULL UP AS FAR TO THE RIGHT AS POSSIBLE TO ALLOW FOR THE FLOW OF TRAFFIC
- AVOID DANGEROUS MANEUVERS SUCH AS U-TURNS AND THREE-POINT TURNS
- ALWAYS DROP OFF OR PICK UP FROM THE DESIGNATED ZONE AND FOLLOW THE SIGNS
- DRIVERS SHOULD REMAIN IN THEIR VEHICLES AT ALL TIMES IN THE DROP-OFF AND PICK-UP ZONE
- DRIVERS SHOULD PULL FORWARD UP TO THE FARTHEST CONE SO THAT WE CAN UNLOAD MANY CARS AT A TIME
- BE CAREFUL, COOPERATIVE, AND PATIENT! **WATCH OUT FOR KIDS AND OTHER VEHICLES**
- CHILDREN SHOULD ONLY BE RELEASED AT THE CONES
- MAKE SURE CHILDREN USE THE **SAFETY DOOR** TO GET IN AND OUT OF THE CAR
- MAKE SURE THE HANDBRAKE IS APPLIED WHEN THE VEHICLE IS STATIONARY
- FOLLOW THE TRAFFIC SECURITY INSTRUCTIONS
- PARKING FOR PARENT BUSINESS FROM 9:00 AM TO 12:00 PM
- CHILDREN SHOULD BE READY TO EXIT VEHICLES IMMEDIATELY
- ARIS LOT IS A NO CELL PHONE ZONE
- DRIVE IN A SINGLE-FILE LINE
- INFORM YOUR DRIVERS OF THE FLOW
- **DO NOT STOP AND DROP OFF IN UNMARKED AREAS**



## SAFETY TIPS FOR STUDENTS

- ALWAYS GET IN AND OUT OF THE VEHICLE THROUGH THE SAFETY DOOR, THE REAR FOOTPATH SIDE DOOR
- STAY BUCKLED UP UNTIL THE VEHICLE HAS STOPPED IN THE DROP-OFF / PICK-UP AREA
- MAKE SURE YOUR SCHOOL BAG AND OTHER ITEMS ARE IN A SAFE POSITION, SUCH AS ON THE FLOOR
- BE READY TO GET OUT OF THE VEHICLE WITH YOUR BELONGINGS WHEN THE CAR HAS STOPPED AND YOU HAVE UNBUCKLED YOUR SEATBELT
- WATCH FOR CARS WHEN USING PEDESTRIAN CROSSINGS
- LOOK FOR THE ADULT IN THE REFLECTIVE SAFETY VEST FOR ASSISTANCE
- KNOW THE TRAFFIC RULES ON CAMPUS
- HAVE YOUR BACKPACKS AND SCHOOL ITEMS WITH YOU, **NOT IN THE BOOT**
- YOU SHOULD BE READY TO DROP OFF AS QUICKLY AS POSSIBLE
- STUDENTS SHOULD WAIT UNTIL THE DOOR IS OPENED BY A VOLUNTEER
- CARPOOL, CARPOOL, CARPOOL!
- WEAR YOUR MASK ON CAMPUS



## SAFETY TIPS FOR PARENT/STUDENT VOLUNTEERS

- ALWAYS WEAR YOUR REFLECTIVE VEST
- WAIT FOR THE DRIVER TO REACH THE CONE AREA
- REMAIN ON THE FOOTPATH WHEN HELPING STUDENTS TO EXIT AND ENTER EACH VEHICLE
- DO NOT ATTEMPT TO DIRECT TRAFFIC AND DO NOT ENTER THE ROAD ENVIRONMENT