



What is the International Baccalaureate?

The International Baccalaureate® aims to develop inquiring, knowledgeable and caring young people who help to create a better and more peaceful world through intercultural understanding and respect.

To this end the organization works with schools, governments and international organizations to develop challenging programmes of international education and rigorous assessment.

These programmes encourage students across the world to become active, compassionate and lifelong learners who understand that other people, with their differences, can also be right. www.ibo.org

EARLY YEARS PROGRAMME: PLAYGROUP

The Playgroup year ranges from the ages 12 to 28 months. Children are born ready, able and eager to learn. They actively reach out to interact with other people, and the world around them.

Development is not an automatic process, however, it depends on each unique child having opportunities to interact in positive relationships and enabling environments. Hence, the Playgroup children are nurtured as a part of the Early Years Programme framework, which focuses on the seven areas of learning.

THE INTERNATIONAL BACCALAUREATE® (IB) PRIMARY YEARS PROGRAMME (PYP)

ARIS is an authorized International Baccalaureate® Primary Years Programme (PYP) school, authorized in April, 2016. The Primary Years Programme (PYP) is for students between the ages of 3 to 11 years old.

ARIS is committed to structured inquiry, as the vehicle for learning. Six trans-disciplinary themes provide the framework for the exploration and construction of knowledge. Teachers and students are guided by these trans-disciplinary themes — as they design Units of Inquiry for exploration and study.

Through this process, students develop an understanding of important concepts, acquire essential skills and knowledge, develop particular attitudes and learn to take socially responsible action.

We believe in the holistic development of children; tapping on to their potential curiosity and innate talents to bring out well balanced confident individuals, and lifelong independent learners.

We strive to develop open-minded global citizens who respect cultures, who nurture the diversity found around them, and who endeavor to lead by example. We develop attitudes that make our learners caring and empathetic towards those less privileged and, enable them to realize that they have the power to make a change.

We respect each child's individuality and uniqueness and are committed to enrich and widen their horizons.



INSPIRE



EMPOWER



TRANSFORM



ENHANCED PRIMARY YEARS PROGRAMME (PYP)

The only constant at ARIS is change. The IBPYP is now transitioning into something known as the 'Enhanced PYP'. The introduction of the 'Enhanced PYP' to our curriculum and framework at ARIS will focus on three main elements: The Learner, Learning and Teaching and the Learning Community.

The centre of the Enhanced PYP Model is 'Agency' which is a combination of student voice, choice and ownership of their learning. The programme challenges students and prepares them for the future as the world around us constantly changes.

Moreover, the Enhanced PYP brings substantial changes into Lesson Plans, as students navigate their agency. The IB Learner Profiles also now incorporate what was previously the IB Attitudes.

The enhancements in the Enhanced PYP are more adaptable to the students needs and interests in a diverse school community, like ours.

THE INTERNATIONAL BACCALAUREATE® (IB) MIDDLE YEARS PROGRAMME (MYP)

ARIS is an authorized International Baccalaureate® Middle Years Programme (MYP) school since May, 2019. The Middle Years Programme (MYP) emphasizes conceptual and real-world contextual learning, as well as Approaches to Learning skills development for students between the ages of 11 to 16. Students engage in service-learning to inspire, empower and transform local and global communities, become critical and creative thinkers as well as develop metacognitive competency to understand how they learn. These skills prepare students for future success in the Diploma/Career-related Programmes and in life.

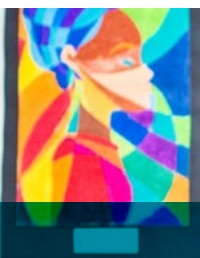
INTERNATIONAL BACCALAUREATE DIPLOMA PROGRAMME (IBDP)

The Diploma Programme (DP) aims to deliver a broad, balanced, coherent and consistent programme of learning with clear and smooth progression routes, designed for the needs of all students.

The curriculum supports the development of students and teachers who are confident, responsible, reflective, innovative and engaged. These are students who, in other words, are developing the attributes of the IB Learner Profile.

The International Baccalaureate® (IB) Diploma Programme (DP) is for students between the ages of 16-19.

Students are provided with inspiring and relevant content, and a breadth of subject knowledge and skill development appropriate to their developmental stage.



Why choose ARIS?

CORE PURPOSE

"We are a diverse community of learners that are committed to Inspire, Empower, and Transform for a better world."

The International Baccalaureate® (IB) Career-related Programme (CP)



Al-Rayan International School is a candidate school* for the CP. This school is an IB World School. IB World Schools share a common philosophy- a commitment to high-quality, challenging, international education- that we believe is important for our students. For further information about the IB and its programmes visit <http://www.ibo.org>.

The Career-related Programme (CP) runs parallel to the IBDP, providing a more flexible, international framework for personalized learning, while incorporating the values of the IB. This career-related education geared mostly towards students who want to specialize based on their unique talents, needs and career aspirations.

Students in the IBCP are required to take a minimum of two IBDP subjects in order to have a strong theoretical understanding. This is coupled with more vocational and specialized elements of learning that provide practical knowledge and skills, through various sets of internships/apprenticeships. The IBCP is a great foundation for students who require specialized and lifelong skills for better competency in university and their future careers.

As an all-inclusive IB Continuum School, we believe in the provision of the best opportunities that match our students diversified needs and competencies. ARIS is now a Candidate school for the IBCP. With authorization, it will make us the first school in Africa to offer all four IB Programmes.

ARIS PERSONALIZED LEARNING PROGRAMME

ARIS has a highly skilled Personalized Learning department headed by Dr. Funke Baffour-Awuah, the Head of Counseling and Support. The departments are across both the Primary and Secondary campuses with two Special Educational Needs Coordinators (SENCo) overlooking the personalized learning programmes running.

Aside from Differentiation which is followed throughout the school, the department also offers a variety of specialized support programmes, depending on a student's need.

Pull-out support is when a student is taken out of the classroom for a period of time for personalized instruction, and One-on-one support that appoints a shadow-teacher who is in constant contact with a student in order to provide learning support.

The Department has also grown into providing wellbeing sessions for students that goes with the new ARIS Wellbeing Model.



Get in touch

✉ communication@aris.edu.gh
🌐 www.aris.edu.gh
📱 ARIS_Ghana 📺 ARISGhana